

Parent's Experiences of Home-Based ABA Programs for Young Children with ASD

Examining the unique challenges and successes of parents implementing home-based ABA programs, providing a foundation for better support and collaboration.

- Insights from Grindle, Kovshoff, Hastings, & Remington (2009)

Learning Objectives

Understand

Understand key findings from the study by Grindle et al. (2009).

Explore

Explore parents' perspectives on ABA programs.

Discuss

Discuss implications for practitioners and caregivers.

Introduction to the Study

This study serves as a critical exploration of the family dynamics and practical challenges associated with implementing home-based ABA programs.

Published in 2009.

Examined home-based ABA programs for young children with ASD.

Focused on parents' perceptions and experiences.

Research Methodology

Surveys captured structured feedback, while interviews provided nuanced, qualitative insights, ensuring a holistic understanding of parent experiences.

Participants: Parents of young children with ASD.

Mixed-method approach: Surveys and interviews.

Focus: Program satisfaction and perceived outcomes.

Emergent Themes from Parent Feedback



These themes highlight the dual narrative of achievement and struggle, emphasizing the importance of tailored support in achieving sustainable outcomes.



Satisfaction with progress.



Challenges in balancing program demands.



Importance of collaboration with practitioners.

Positive Aspects of ABA Programs

These experiences demonstrate the potential of ABA programs to transform family dynamics and foster meaningful growth for children.



Tangible improvements in behavior.

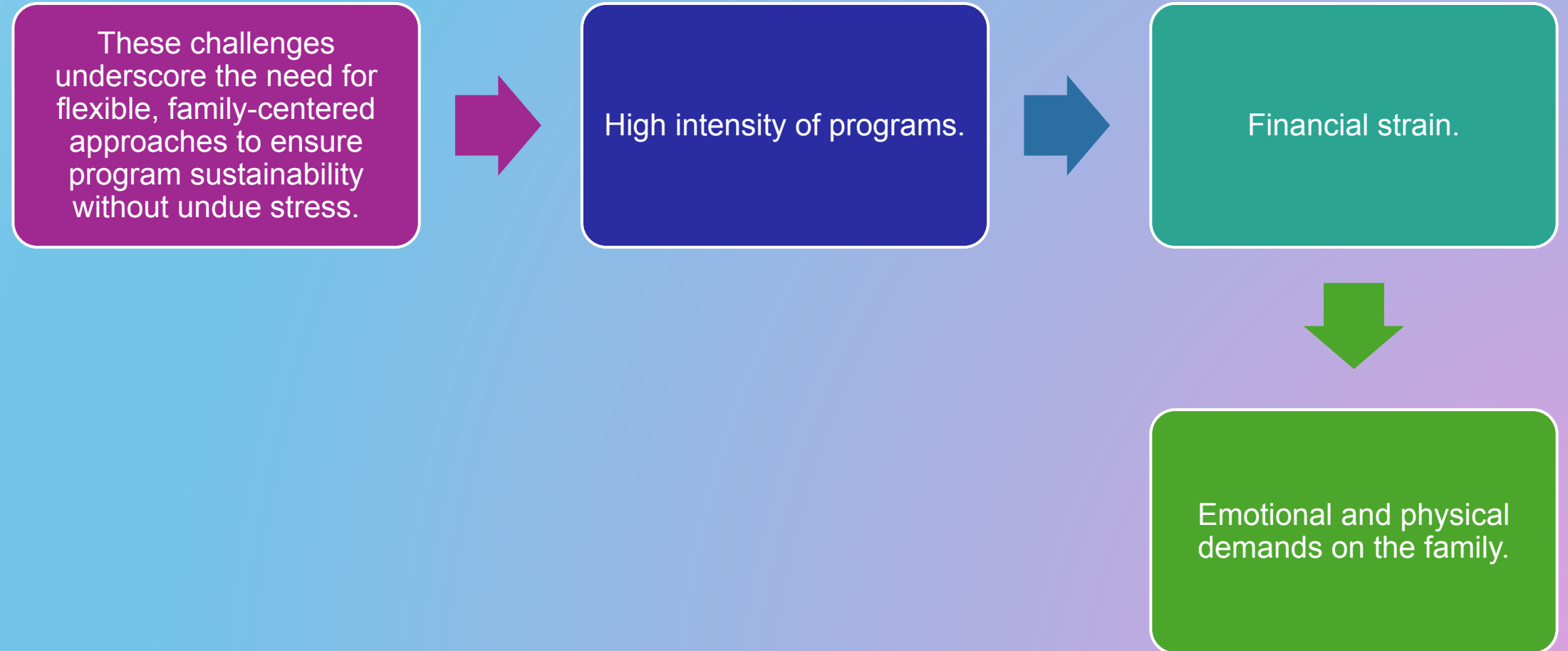


Increased communication skills.



Empowerment through skill acquisition.

Challenges in Home-Based ABA



Parent-Practitioner Collaboration



Effective collaboration fosters trust, aligns goals, and enhances program efficacy through shared decision-making and open communication.



Importance of mutual respect.

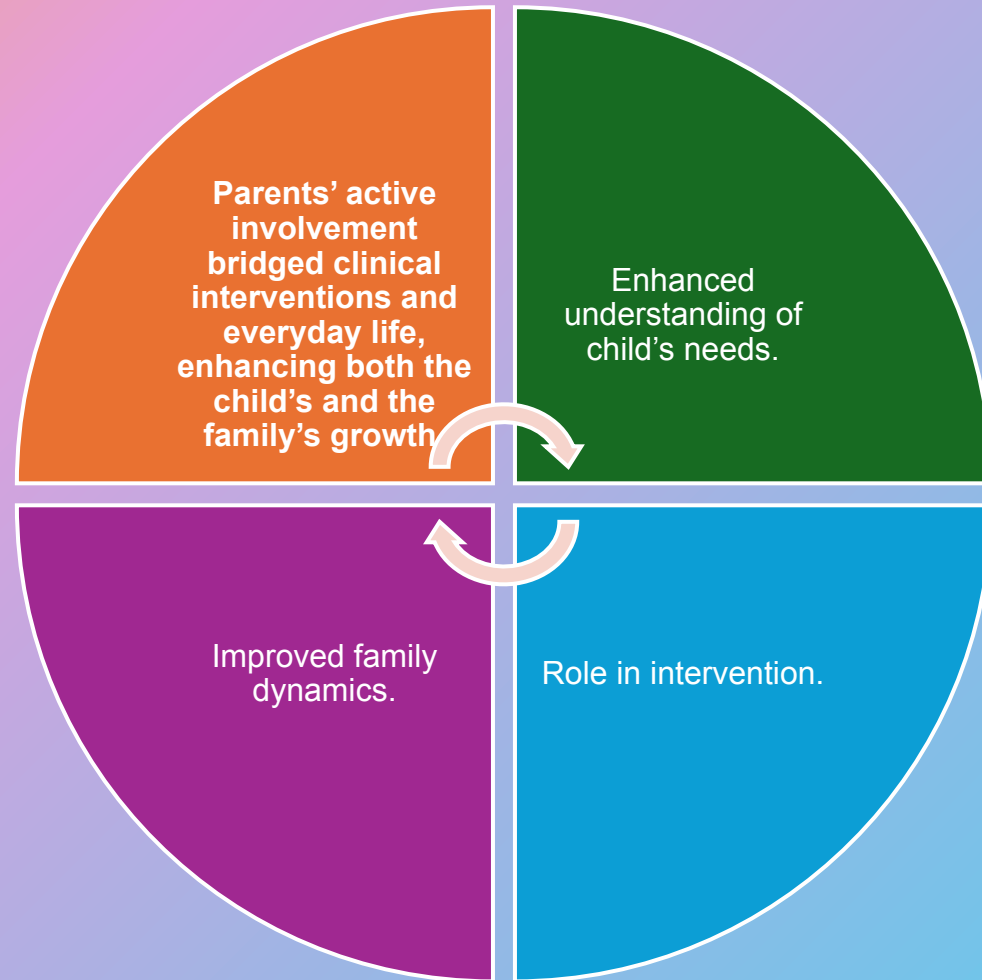


Need for clear communication.



Involvement in goal-setting

Insights into Parenting Experience



Practitioner Implications

By prioritizing adaptability and empathy, practitioners can foster more effective and family-centered program implementations.

Flexibility in scheduling.

Awareness of family dynamics.

Providing emotional support.

Outcomes for Children



These outcomes illustrate the transformative potential of ABA interventions when implemented with care and collaboration.



Improved adaptive skills.



Better communication.



Reduction in challenging behaviors.

Policy Implications

Policies must address affordability and accessibility to ensure equitable access to ABA programs, reducing barriers for families in need.

Advocacy for funding.

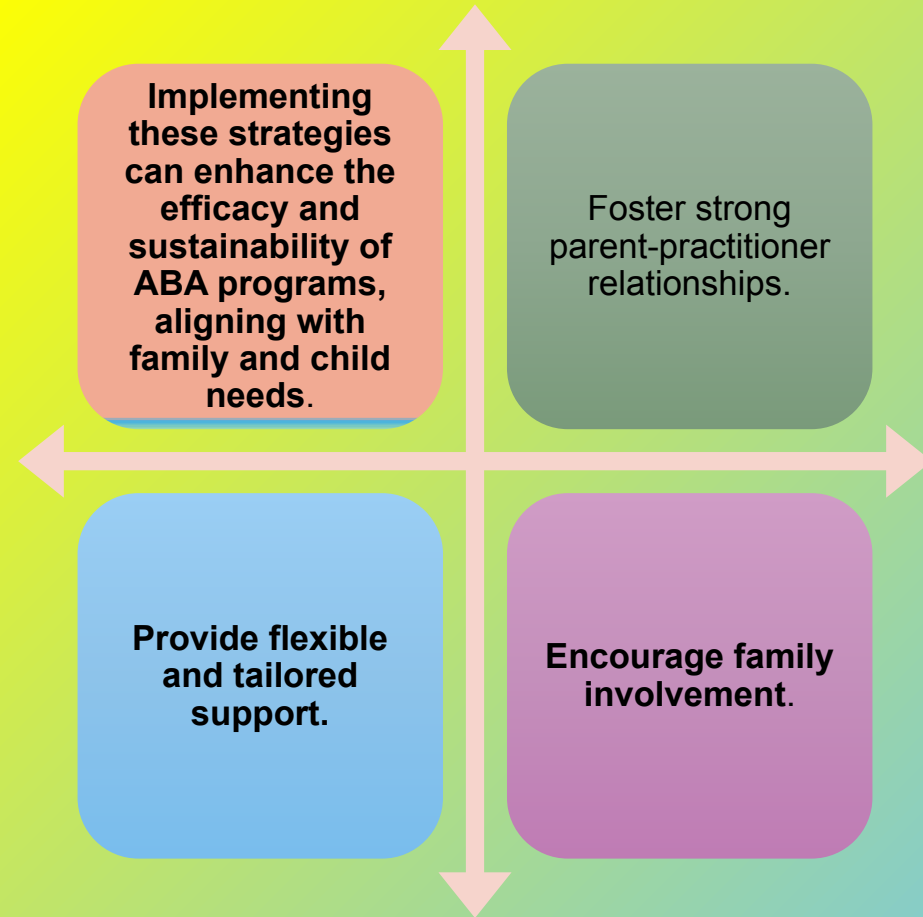
Support for caregiver training.

Accessibility of services.

Identified Research Gaps



Recommendations for Practitioners



Conclusion

A balanced, collaborative approach is essential for sustainable success and long-term impact.

ABA programs yield significant benefits.

Parental involvement is crucial.

Balancing demands is a challenge.